

March 2023	Sunday 5th Lent 2	Sunday 12th Lent 3	Sunday 19th Mothering Sunday	Sunday 26th Lent 5 Passion Sunday
Athelington	9.30am JM CW Holy Communion			
Denham			11am EG CW Holy Communion	
Horham			11.15am JM BCP Holy Communion	
Hoxne	9.30am EG BCP Holy Communion	9.30am EG Café Church	9.30am JM CW Holy Communion	11am EG CW Holy Communion* 4pm EG All-age service
Redlingfield		9.30am RC CW Holy Communion		
Syleham	4pm Messy Church Syleham village hall ML + team		10am ML Village Service	9.30am EG BCP Holy Communion
Wingfield	11am EG CW Holy Communion		6pm Evensong in church and on Zoom	

\* 4th Sunday in Hoxne, as above - note new time and new service

### Online Services

Every Saturday and Sunday: Morning Prayer on facebook.com/WingfieldChurch, 8am

Every Friday in Lent: Compline in Wingfield church and on Zoom.

On the rotas....

EG - Revd Eleanor Goodison JM - Revd John McCracken

ML - Mary Lewis RC - Revd Richard Court

### Church contacts

Athelington: St Peter.	Colin Palmer 01728 628747
Denham: St John the Baptist.	Barbara Irwin 01379 669077, Hilary Castleden 01379 668458
Hoxne: St Peter & St Paul.	Guy McGregor 01379 668434, Wilf White 01379 668046
Horham: St Mary.	David Spall 01379 384239, Daphne Harvey 01379 384216
Redlingfield: St Andrew.	Hazel Abbott 01379 678217
Syleham: St Margaret.	Mary Lewis 01379 669258, Sarah Buckley 01379 668480
Wingfield: St Andrew.	Revd Eleanor Goodison 07876 143579

# Hoxne Benefice Churches

Athelington Denham Horham

Hoxne Redlingfield

Syleham Wingfield

## March 2023 News

The  
Season  
of  
Lent



### A time to sow....

Spring is a time to sow seeds, in the hope and confidence that they will grow and flourish over the summer months. For us spiritually, too, spring is a time of growth. Have a look at our programme of Lent activities, details overleaf, and see what might help you to grow in your faith.

As churches, we will also be doing some self-examination in preparation for and at our annual meetings which will be taking place over the next couple of months. Everyone is welcome to attend to hear about what we have been doing, the opportunities we see and the challenges we face. We will be aiming to identify our priorities for the future and hope you will contribute your ideas on what you see as important. Some examples are:

- \* we want to expand our work with children and young people with the help of a part-time Children's and Youth Worker (If there is anyone out there who has appropriate experience and would like to help with this, please get in touch).

- \* we also continue to develop plans to make Redlingfield church a space which the whole community can use and enjoy and to create a community room at the base of Hoxne church tower as part of our bells project.

Let us know your thoughts, what's on your mind and where we should focus.

Sadly we have had to say goodbye to some beloved and valued members of our churches over the last few weeks. Michael Whatling of Horham, a faithful servant of the church, died on 22nd January. His quiet presence will be very much missed. Our heartfelt sympathy goes out to his brother David.

And on 23rd February, John and Anne Swann moved from Hoxne to Northern Ireland. Both John and Anne have been tirelessly active in serving both the church and the community in Hoxne and John has been a lay elder in the church for many years. We wish them every blessing in their new home and hope to see them on frequent visits back to Suffolk.

### Revd Eleanor Goodison

Revd Eleanor usually works Friday to Monday and is available for urgent matters on Tuesday and Wednesday. Thursday is her day off. Messages received Thursday will normally be dealt with Friday.

If you need help or just want to chat, please contact us:

Revd Eleanor: 07876 143579 eleanor.goodison@gmail.com

Revd John: 07876 507288 vj.mccracken@gmail.com

Revd Richard: rev.richard.court@icloud.com





Lent began on Ash Wednesday, 22nd February, and continues throughout March. Our special activities for Lent include:

\* **Compline at 6pm** each Friday evening in Wingfield church and on Zoom. For the Zoom link, contact Revd Eleanor.

\* **joining Bishop Mike on Zoom** at 7pm on Tuesday evenings starting on 28th February for his Lent sessions based on the book *Practising the Presence of God* written by Brother Lawrence in the 1600s. To book for these sessions, go to [eventbrite.co.uk](http://eventbrite.co.uk) and search for 'Living your life with God'. We will be suspending our usual Bible Study Group meetings during March to allow you to join Bishop Mike instead.

\* **reading the Archbishop of Canterbury's Lent book:** *Failure*, by Bishop Emma Ineson, about 'sin, mistakes and messing stuff up'. We will have a special session to discuss the book on Thursday 30th March at 6pm in a book club format, venue to be confirmed.

\* **supporting our Bishops' Lent Appeal** for Kagera. Go to <https://www.cofesuffolk.org/exploring-faith/our-bishops/bishops-lent-appeal/bishops-lent-appeal-2021.php> for further details.

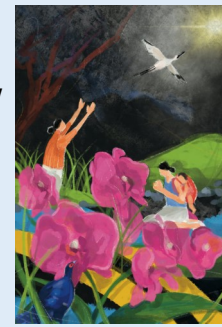
Copies of this newsletter are in church. Email Virginia, to receive it by email, on [hoxnebeneficeoffice@gmail.com](mailto:hoxnebeneficeoffice@gmail.com)

## World Day of Prayer - Friday 3rd March

Formerly Women's World Day of Prayer (with a service previously held in Metfield), this year the service will be at 10.30am in Hoxne church, hosted by Hoxne Mothers' Union Fellowship Group.

Everyone is invited to share in this worldwide, ecumenical event in a service written this year by the women of Taiwan.

Refreshments will be served afterwards.



### MARCH

#### Wednesday 1st

**Redlingfield coffee morning.** 10am to 12 noon at Hidcote Lodge, Mill Road, Redlingfield, IP23 7QU. All welcome.

#### Sunday 5th

**Messy Church**, 4pm at Syleham village hall. Fun and friendship for young children and parents alike, on a Bible theme and, of course, with the 'scrummy tea'.

#### Tuesday 7th

**Coffee and cake:** drop-in café at the village hall in Syleham, 10 to 11.30am. Come with a friend or on your own for a friendly chat or to browse or borrow books.

#### Also Tuesday 7th March

**Little Lambs** meet at Hoxne pavilion from 1.15 to 3.15pm. Children from 0-4 years and their carers very welcome.

#### Wednesday 15th

Our **Book Club** meets at the De La Pole Arms, Wingfield at 6pm. The book for March is *The Beekeeper of Aleppo* by Christy Lefteri.

#### Thursday 16th

At 12noon for about half an hour, our Open the Book team will visit St Edmunds School, Hoxne to present a Bible story. If you would be interested in joining the team and are prepared to dress up and make a fool of yourself twice a term, please contact Cathie McGregor on 01379 668434. We are particularly keen to recruit some more men.

#### Saturday 18th

**Friends of Hoxne church coffee morning** and book sale. 9.45 to 11.15am in the church. All welcome.

#### Monday 20th

**Hoxne Mothers' Union Fellowship group** meets 2.30pm, Time House, Low Street, Hoxne. Contact Cathie McGregor on 01379 668434.

#### Tuesday 21st

**Wingfield coffee morning** at Wingfield Barns, 10am to 12noon.

#### Wednesday 29th

**Deanery synod** meets at 7pm at Burgate church hall. Everyone is welcome to attend – you don't have to be a deanery synod representative.

**Friday 31st** 1 to 1.30pm, Lady Chapel at the Cathedral in Bury St Edmunds: Revd Eleanor will be leading a Lunchtime Lent Address on the theme 'Fearfully and wonderfully made in the image of God'. Everyone is welcome.

### Looking ahead to Holy Week

**Mon 3rd, Tues 4th and Weds 5th**

April Compline, 6pm, in the St Edmund Chapel, Hoxne church.

#### Thurs 6th, Maundy Thursday

**Stripping of the Altar service**, 7pm at Horham church.

**Friday 7th, Good Friday Services** at 12noon at Wingfield and 2.30pm at Hoxne.

**Saturday 8th, Easter Eve Service of Light**, 7.30pm Denham church.

**Sunday 9th, Easter Day** - full programme of Easter services, plus Messy Church Easter Egg hunt on J's meadow at 4pm.

**A warm space in Horham.** The Old School in Horham is open Wednesdays, 9.30am to 3pm (with the heating on), incorporating the regular 10.30am to 12noon coffee morning. Donations sought of jigsaw puzzles, board games, children's toys and books and knitting needles/wool to knit blanket squares for Moldova. Donations can be left in the church on days when the Old School is closed.

### [easyfundraising.org.uk](http://easyfundraising.org.uk)

It really is easy for anyone who shops online...giving the benefice a percentage of everything you spend. So far, we have raised **£958** for the benefice this way – so it is well worth it! [easyfundraising.org.uk/causes/hoxnebenefice](http://easyfundraising.org.uk/causes/hoxnebenefice).